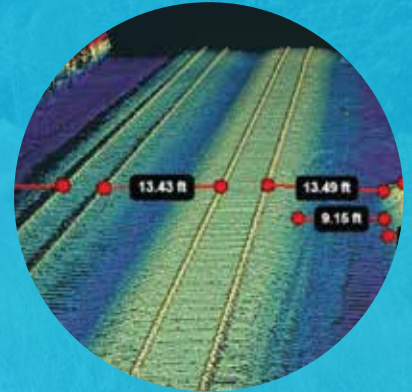


## MAKE THE MOST OF YOUR TRACK INSPECTIONS BY COMBINING TRACK GEOMETRY WITH RICH DATA INPUTS FOR A DIGITAL TWIN OF YOUR INFRASTRUCTURE.

Holland's LiDAR powered by Cordel is the latest addition to our suite of track measurement systems and services. LiDAR provides you with a range of data applications such as track imagery, clearance validation, line of sight, site measurements, condition assessments and more.

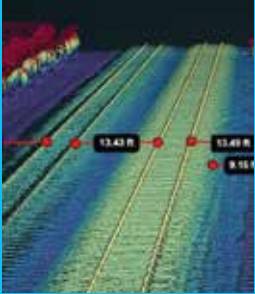


The simple cloud-based user interface allows any user or stakeholder to simply login and: search for data by date and location; click to view and manipulate associated imagery, video and point clouds; download and share; and click to order customized automatically generated reports for all types of asset monitoring and inspection applications.

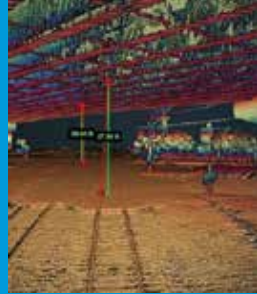


- Do virtual site visits for dozens of use cases
- Street-view like navigation
- Network wide coverage
- Compatible with all .laz, .las and imagery formats
- Sync with network Linear Reference System
- Integrate with existing enterprise GIS environments

# DATA APPLICATION



- Survey grade trajectory
- Colorized point clouds
- High resolution imagery
- Providing colorized point clouds, high resolution video imagery served up in an easy-to-use web interface with basic and easy to use visualization tools and simple organization wide access to data.



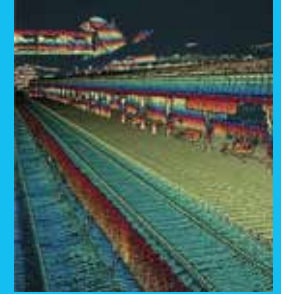
- Classified infringements: Vegetation, structures, platforms
- Survey grade accuracy
- Providing an extruded kinematic profile automatically, the system outputs classified and quantifiable infringement reports in formats used by most of the world's railways.



- Rail head detection
- Centerline calculation
- Overhead wiring geometry
- Automate rail head, centerline and overhead lines extraction. Update and reference to networks LRS, calculate OLE geometry, calculate intervals across all types of railways including third rail areas.



- Report volumes
- Conditional reporting
- Track changes over time
- Monitor and report volumes, deficiencies, and exceedances. Compare data against idealistic standards and classify different areas for conditional reporting.



- Map Assets (baseline)
- Report changes
- ISO / PTC compliances
- Accurately map your railway (baseline), continuously scan network and automatically report asset changes over time. Enforce compliance and build efficiency.